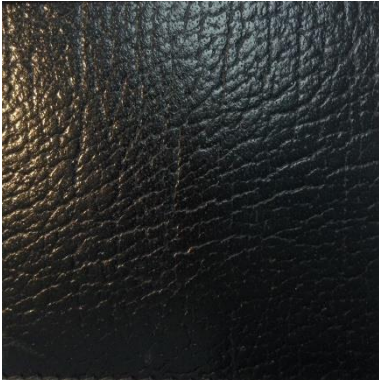
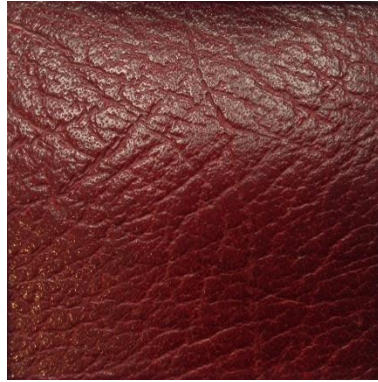


“Vintage” Filofax Colour Chart

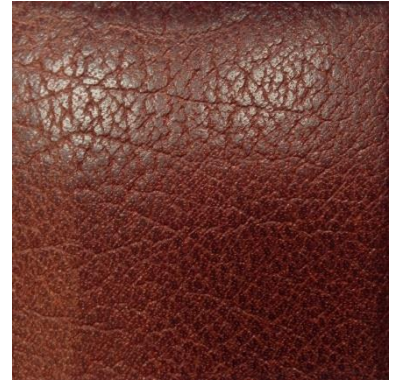
Calf Leather (CL)



CL BK (Black)



CL BY (Burgundy)



CL BN (“Mid Brown”)



CL BN (“Light Brown”)



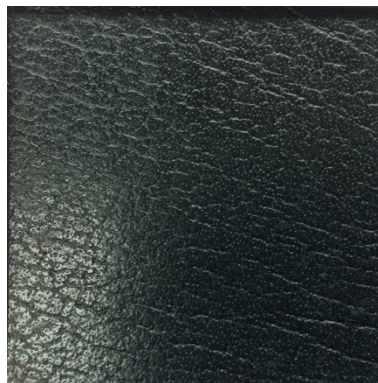
CL RD (“Dark Red”)



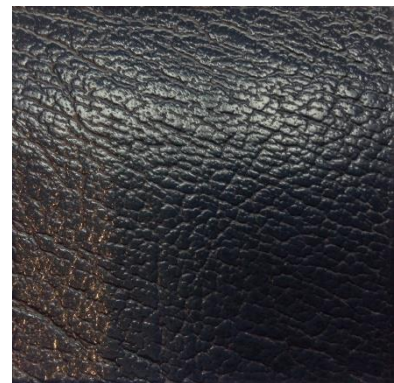
CL RD (“Bright Red”)



CL GN (Green)



CL BE (“Blue Black”)



CL BE (“Dark Blue”)

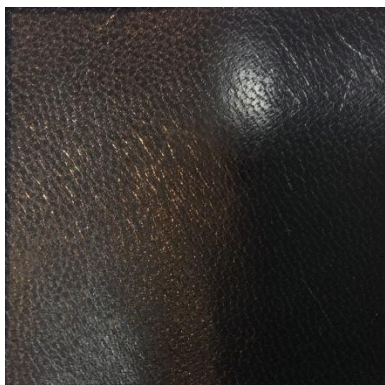


CL GY (Grey)

Two apparently distinct shades are illustrated here for Brown, Red and Blue, and given non official colour names (shown in quotes). These may represent intentional differences, or simply natural variability in manufacture.

The colouring of the lining, stitching and snap fastener are generally a good way to resolve ambiguous shades of calf leather.

Kid Leather (KL)



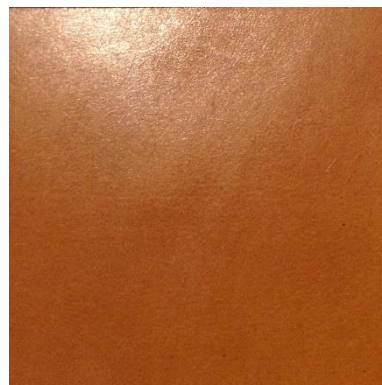
KL BK (Black)

Pigskin (PL)



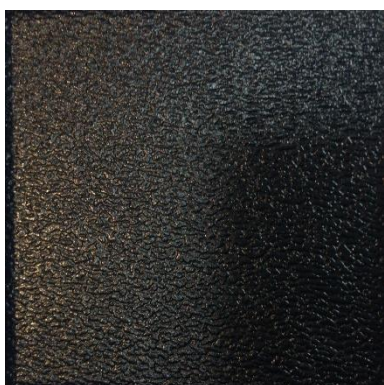
PL

Bridle Leather (BL)



BL TN (Tan)

Morocco Leather (ML)

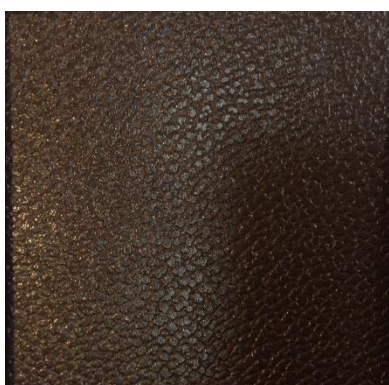


ML BK (Black)

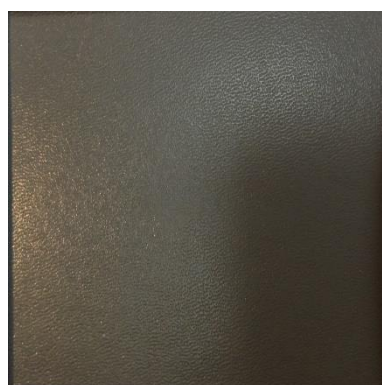
Hide Leather (HL)



HL BN (Brown)



ML BN (Brown)
(A light brown shade also exists.)



HL GY (Grey)